



168 Corporation Street | | Birmingham | B4 6RP

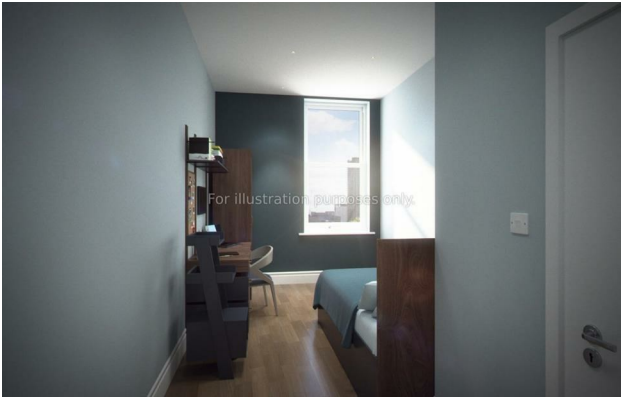
£215 Per week



168 Corporation Street |
Birmingham | B4 6RP
£215 Per week

BIRMINGHAM | STUDENT | SEPTEMBER | B4

- Cinema Room
- Gym Access
- Social Lounge
- On-site Team
- Secure Entry
- Study Lounge
- Games Room
- Bike Storage
- Laundry Room
- High-Speed Wi-Fi



Energy Efficiency Rating		
	Current	Potential
Very energy efficient - lower running costs		
(92 plus) A		
(81-91) B		
(69-80) C		
(55-68) D		
(39-54) E		
(21-38) F		
(1-20) G		
Not energy efficient - higher running costs		
England & Wales	EU Directive 2002/91/EC	

Lower Ground Floor
27 Ridley Place
Newcastle upon Tyne
Tyne and Wear
NE1 8JN
0191 6403450
info@propertybynest.co.uk